

PROJECT NO.	SHEET NO.	TOTAL NO.
10SP.20135.5, 10SP.20845.1	1	5

SUMMARY OF QUANTITIES

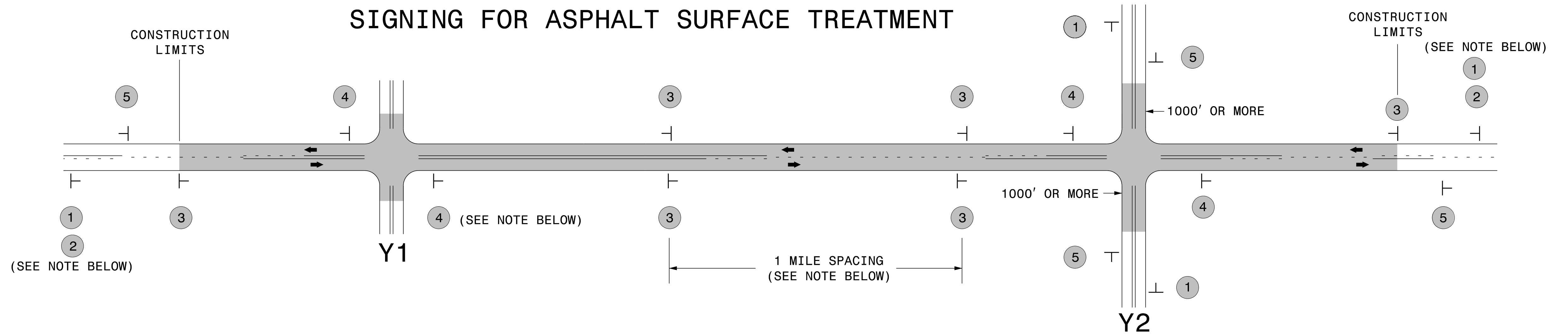
PROJECT NO	COUNTY	MAP NO	ROUTE	DESCRIPTION	LANES	LENGTH MI	WIDTH FT	ASPHALT SURFACE TREATMENT, DOUBLE SEAL SY	EMULSION FOR ASPHALT SURFACE TREATMENT GAL	BLOTTING SAND TON	WORK ZONE ADVANCE/GENERAL WARNING SIGNING SF	TEMPORARY TRAFFIC CONTROL LS
10SP.20135.5	Cabarrus	1	SR 2663 (LOWDER RD)	FROM NC 49 TO SR 2450 (GOLD HILL RD EAST)	2	1.14	20	13,376	7,357		116	
TOTAL FOR MAP NO. 1						1.14		13,376	7,357		116	
10SP.20135.5	Cabarrus	2	SR 2601 (BETHEL CH. RD.)	FROM SR 2444 (DUTCH RD) TO THE STANLY COUNTY LINE	2	1.19	20	13,963	7,679		116	
TOTAL FOR MAP NO. 2						1.19		13,963	7,679		116	
10SP.20135.5	Cabarrus	3	SR 2602 (BEAR CREEK CH RD)	FROM SR 2453 (LENTZ HARNESS SHOP RD) TO THE STANLY COUNTY LINE	2	0.53	20	6,219	3,420		116	
TOTAL FOR MAP NO. 3						0.53		6,219	3,420		116	
10SP.20135.5	Cabarrus	4	SR 2603 (LITTLE BEAR CREEK RD)	FROM SR 2444 (DUTCH RD) TO SR 2453 (LENTZ HARNESS SHOP RD)	2	1.21	20	14,197	7,809		116	
TOTAL FOR MAP NO. 4						1.21		14,197	7,809		116	
10SP.20135.5	Cabarrus	5	SR 2608 (HAHN RD)	FROM SR 2453 (LENTZ HARNESS SHOP RD) TO NC 73	2	0.82	19	9,140	5,027		116	
TOTAL FOR MAP NO. 5						0.82		9,140	5,027		116	
10SP.20135.5	Cabarrus	6	SR 2611 (LAMBERT RD)	FROM NC 73 TO PICKENS RD	2	1.86	20	21,824	12,003		212	
TOTAL FOR MAP NO. 6						1.86		21,824	12,003		212	
10SP.20135.5	Cabarrus	7	SR 2459 (WAGNOR RD)	FROM US 52 TO THE ROWAN COUNTY LINE	2	0.61	20	7,157	3,937		116	
TOTAL FOR MAP NO. 7						0.61		7,157	3,937		116	
10SP.20135.5	Cabarrus	8	SR 2450 (GOLD HILL RD EAST)	FROM NC 49 TO THE ROWAN COUNTY LINE	2	3.37	20	39,541	21,748		276	
TOTAL FOR MAP NO. 8						3.37		39,541	21,748		276	
10SP.20135.5	Cabarrus	9	SR 2455 (SHORT CUT RD)	FROM SR 2450 (GOLD HILL RD EAST) TO SR 2457 (GLENMORE RD)	2	2.35	20	27,573	15,165		212	
TOTAL FOR MAP NO. 9						2.35		27,573	15,165		212	
10SP.20135.5	Cabarrus	10	SR 2612 (HAHN SCOTT RD)	FROM NC 73 TO SR 2610 (BOWMAN BARRIER RD)	2	1.19	20	13,963	7,679		138	
TOTAL FOR MAP NO. 10						1.19		13,963	7,679		138	
10SP.20135.5	Cabarrus	11	SR 2617 (HAHN SCOTT RD)	FROM SR 2610 (BOWMAN BARRIER RD) TO SR 2622 (BARRIER STORE RD)	2	1.71	20	20,064	11,035		138	
TOTAL FOR MAP NO. 11						1.71		20,064	11,035		138	
10SP.20135.5	Cabarrus	12	SR 2616 (CAUBLE RD)	FROM SR 2610 (BOWMAN BARRIER RD) TO SR 2622 (BARRIER STORE RD)	2	2.4	20	28,160	15,488		244	
TOTAL FOR MAP NO. 12						2.4		28,160	15,488		244	
10SP.20135.5	Cabarrus	13	SR 2610 (BOWMAN BARRIER RD)	FROM MT. PLEASANT CITY LIMITS TO SR 2611 (LAMBERT RD)	2	2.92	18	30,835	16,959		308	
TOTAL FOR MAP NO. 13						2.92		30,835	16,959		308	
10SP.20135.5	Cabarrus	14	SR 2691 (BUSBIN RD)	FROM SR 2444 (CRUSE RD) TO DEAD END	2	0.67	20	7,861	4,324		116	
TOTAL FOR MAP NO. 14						0.67		7,861	4,324		116	
10SP.20135.5	Cabarrus	15	SR 2618 (LONG RUN FARM RD)	FROM SR 2610 (BOWMAN BARRIER RD) TO SR 2612 (HAHN SCOTT RD)	2	2.1	20	24,640	13,552		180	
TOTAL FOR MAP NO. 15						2.1		24,640	13,552		180	
10SP.20135.5	Cabarrus	16	SR 2614 (PAIGE RD)	FROM SR 2611 (LAMBERT RD) TO SR 2616 (CAUBLE RD)	2	1.7	20	19,947	10,971		212	
TOTAL FOR MAP NO. 16						1.7		19,947	10,971		212	
10SP.20135.5	Cabarrus	17	SR 2650 (ROUND TREE RD)	FROM SR 2612 (HAHN SCOTT RD) TO SR 2661 (CAUBLE RD)	2	0.36	20	4,224	2,323		116	
TOTAL FOR MAP NO. 17						0.36		4,224	2,323		116	
10SP.20135.5	Cabarrus	18	SR 2457 (GLENMORE RD)	FROM THE STANLY COUNTY LINE TO THE ROWAN COUNTY LINE	2	1.29	18	13,622	7,492		90	
TOTAL FOR MAP NO. 18						1.29		13,622	7,492		90	
TOTAL FOR PROJ NO. 10SP.20135.5						27.42		316,306	173,968	10	2,938	0.5
10SP.20845.1	Stanly	19	SR 1502 (GOLD BRANCH RD)	FROM SR 1005 (HIGH ROCK RD) TO NC 49	2	0.88	18	9,293	5,111		90	
TOTAL FOR MAP NO. 19						0.88		9,293	5,111		90	
10SP.20845.1	Stanly	20	SR 1504 (PARKER MEMORIAL RD)	FROM SR 1502 (GOLD BRANCH RD) TO THE DEAD END	2	2.41	19	26,863	14,775		116	
TOTAL FOR MAP NO. 20						2.41		26,863	14,775		116	
10SP.20845.1	Stanly	21	SR 1505 (WILLIE RD)	FROM SR 1502 (GOLD BRANCH RD) TO THE ROWAN COUNTY LINE	2	2.1	20	24,640	13,552		180	
TOTAL FOR MAP NO. 21						2.1		24,640	13,552		180	

PROJECT NO.	SHEET NO.	TOTAL NO.
10SP.20135.5, 10SP.20845.1	2	5

SUMMARY OF QUANTITIES

PROJECT NO	COUNTY	MAP NO	ROUTE	DESCRIPTION	LANES	LENGTH MI	WIDTH FT	ASPHALT SURFACE TREATMENT, DOUBLE SEAL SY	EMULSION FOR ASPHALT SURFACE TREATMENT GAL	BLOTTING SAND TON	WORK ZONE ADVANCE/GENERAL WARNING SIGNING SF	TEMPORARY TRAFFIC CONTROL LS
10SP.20845.1	Stanly	22	SR 1507 (GOLD BRANCH RD)	FROM NC 49 TO OLD 52	2	2.41	18	25,450	13,997		218	
TOTAL FOR MAP NO. 22												
10SP.20845.1	Stanly	23	SR 1508 (INGRAM RD)	FROM NC 49 TO NC 8	2	1.4	20	16,427	9,035		148	
TOTAL FOR MAP NO. 23												
10SP.20845.1	Stanly	24	SR 1514 (BALDWIN RD)	FROM NC 8 TO NC 740	2	1.75	20	20,533	11,293		212	
TOTAL FOR MAP NO. 24												
10SP.20845.1	Stanly	25	SR 1515 (HERLOCKER RD)	FROM SR 1514 (BALDWIN RD) TO NC 8	2	1.26	20	14,784	8,131		116	
TOTAL FOR MAP NO. 25												
10SP.20845.1	Stanly	26	SR 1524 (KIRK RD)	FROM NC 740 TO SR 1548 (CARTER ACRES RD)	2	1.66	20	19,477	10,713		148	
TOTAL FOR MAP NO. 26												
10SP.20845.1	Stanly	27	SR 1535 (KEMP RD)	FROM SR 1522 (MT. CREEK CH. RD) TO SR 1534 (PALESTINE RD)	2	0.81	20	9,504	5,227		116	
TOTAL FOR MAP NO. 27												
10SP.20845.1	Stanly	28	SR 1544 (SHAVER RD)	FROM NC 740 TO SR 1524 (KIRK RD)	2	0.79	20	9,269	5,098		116	
TOTAL FOR MAP NO. 28												
10SP.20845.1	Stanly	29	SR 1545 (MT. VIEW RD)	FROM SR 1524 (AIRPORT RD) TO SR 1524 (KIRK RD)	2	1.34	24	18,867	10,377		122	
TOTAL FOR MAP NO. 29												
10SP.20845.1	Stanly	30	SR 1546 (MT. VIEW RD)	FROM SR 1524 (KIRK RD) TO NC 740	2	1.36	24	19,149	10,532		90	
TOTAL FOR MAP NO. 30												
10SP.20845.1	Stanly	31	SR 1548 (CARTER ACRES RD)	FROM SR 1524 (KIRK RD) TO DEAD END	2	0.46	19	5,127	2,820		116	
TOTAL FOR MAP NO. 31												
10SP.20845.1	Stanly	32	SR 1585 (RIDER RD)	FROM SR 1502 (GOLD BRANCH RD) TO SR 1005 (HIGH ROCK RD)	2	1.21	20	14,197	7,809		116	
TOTAL FOR MAP NO. 32												
10SP.20845.1	Stanly	33	SR 1627 (BELL RD)	FROM RICHFIELD CITY LIMITS TO NC 49	2	0.72	20	8,448	4,646		116	
TOTAL FOR MAP NO. 33												
10SP.20845.1	Stanly	34	SR 1720 (VALLEY DRIVE)	FROM BADIN CITY LIMITS TO NC 24/27	2	4.65	22	60,016	33,009		404	
TOTAL FOR MAP NO. 34												
10SP.20845.1	Stanly	35	SR 1723 (BYRD RD)	FROM SR 1720 (VALLEY DR) TO SR 1725 (GUARD RD)	2	1.38	20	16,192	8,906		148	
TOTAL FOR MAP NO. 35												
10SP.20845.1	Stanly	36	SR 1724 (MILLER TOWN RD)	FROM SR1720 (VALLEY DR) TO DEAD END	2	0.34	18	3,590	1,975		116	
TOTAL FOR MAP NO. 36												
10SP.20845.1	Stanly	37	SR 1725 (GUARD RD)	FROM SR 1798 (MORROW MOUNTAIN RD) TO NC 740	2	1.08	18	11,405	6,273		116	
TOTAL FOR MAP NO. 37												
10SP.20845.1	Stanly	38	SR 1456 (GLENMORE RD)	FROM THE CABARRUS COUNTY LINE TO US 52	2	0.64	20	7,509	4,130		58	
TOTAL FOR MAP NO. 38												
TOTAL FOR PROJ NO. 10SP.20845.1						28.65		340,740	187,409	10	2,862	0.5
GRAND TOTAL						56.07		657,046	361,377	20	5,800	1

SIGNING FOR ASPHALT SURFACE TREATMENT



LEGEND	
┆	STATIONARY SIGN
←	DIRECTION OF TRAFFIC FLOW

MAINLINE (-L-) SIGNING

-Y- LINE SIGNING

SIGNING NOTES AND PLACEMENT PER DIRECTION		
1 2	 W20-1 48" X 48" W7-3aP 24" X 18"	<p>PLACE 1000' PRIOR TO BEGINNING OF CONSTRUCTION LIMITS. ONLY USED ON -Y- LINES IF RESURFACING LIMITS EXTEND 1000' ALONG -Y- LINE.</p> <p>#2 SIGN ONLY USED WHEN RESURFACING LIMITS ARE 2 OR MORE MILES IN LENGTH. ROUND UP TO NEXT WHOLE NUMBER. (NO FRACTIONAL OR DECIMAL NUMBERS)</p>
3	 W8-7 48" X 48" SP 48" X 48"	<p>ALTERNATE THE FOLLOWING TWO SIGNS: STARTING WITH "LOOSE GRAVEL" (W8-7) FOLLOWED BY "UNMARKED PAVEMENT".</p> <p>PLACE INITIALLY AT THE CONSTRUCTION LIMITS AND SPACED 1 MILE APART THEREAFTER. IF NO -Y- LINES EXIST, PLACE 2ND SET 1/2 MILE FROM THE CONSTRUCTION LIMITS AND THEN SPACE 1 MILE THEREAFTER.</p>
4	 SP 13106 48" X 48"	<p>THESE ARE FOR -Y- LINES THAT ARE "THROUGH" ROADWAYS. DEAD END AND SUBDIVISION ROADS ARE NOT "THROUGH" ROADWAYS. INSTALL 500' +/- FROM EACH -Y- LINE APPROACH AS SHOWN ABOVE. FOR MULTIPLE -Y- LINES THAT ARE SEPARATED BY 0.25 MILES OR LESS, TREAT AS A SINGLE UNIT AND INSTALL WITHIN 500' OF EACH APPROACH. A MAXIMUM OF 2 SIGN SETS PER MILE. DO NOT INSTALL WHEN -Y- LINES ARE WITHIN 0.5 MILES FROM "END ROAD WORK" SIGN.</p>
5	 G20-2 A 48" X 24"	<p>PLACE 500' FOLLOWING THE END OF CONSTRUCTION LIMITS.</p>

NO REQUIRED STATIONARY SIGNING FOR THE FOLLOWING -Y- LINE CONDITIONS:

- 1) LESS THAN 1000' OF RESURFACING ALONG -Y- LINE
- 2) SUBDIVISION ROADS
- 3) DEAD END ROADS

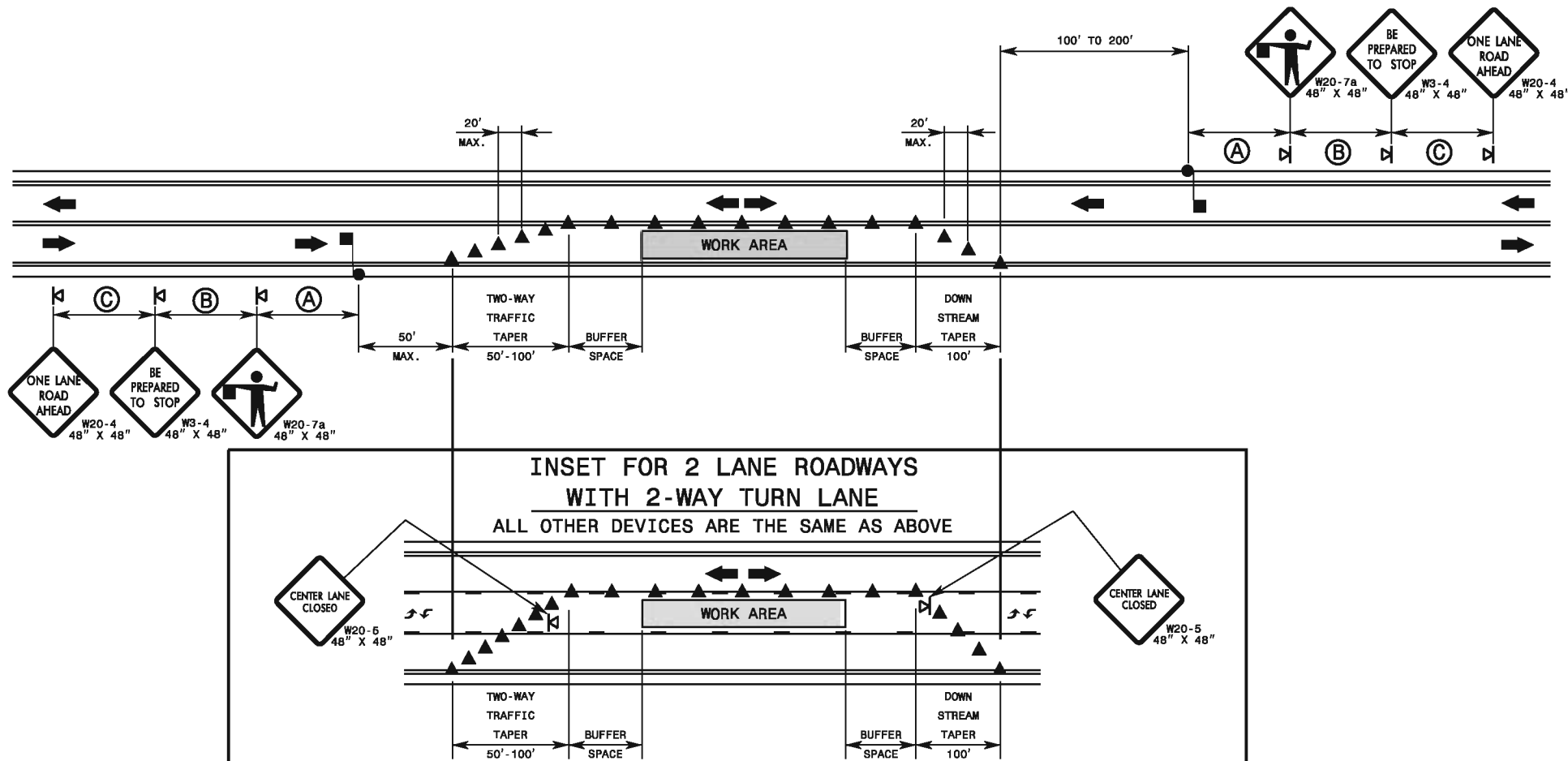
WHEN PAVING/CONSTRUCTION ACTIVITIES PROCEED ACROSS AN UNSIGNED -Y- LINE, ADVANCE WARNING PORTABLE SIGNS SHALL BE USED ALONG THE -Y- LINE AS SHOWN BELOW. REMOVE UPON COMPLETION OF WORK.



PLACED 500' IN ADVANCE OF FLAGGER. PLACED 250' IN ADVANCE OF FLAGGER.

**ADVANCE WARNING SIGNS
FOR
ASPHALT SURFACE TREATMENTS
2 LANE ROADWAYS**

12/22/2014 S:\TMU\WZTC\apps\work\zonegeneral\external\webpage\desres\resurfacing\resurfacing\advwarn_2Ln - AST.dgn User:rmgarr



GENERAL NOTES FOR FLAGGER OPERATIONS

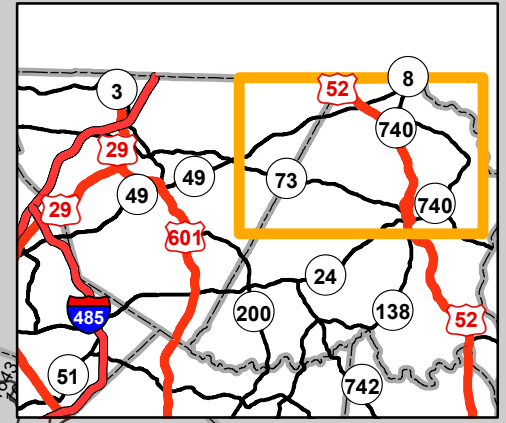
- 1- REFER TO STD. 1101.11 SHEET 4 FOR SIGN SPACING.
- 2- INSTALL LANE CLOSURES WITH THE TRAFFIC FLOW, BEGINNING WITH DEVICES ON THE UPSTREAM SIDE OF TRAFFIC.
- 3- REMOVE LANE CLOSURES AGAINST THE TRAFFIC FLOW, BEGINNING WITH DEVICES ON THE DOWNSTREAM SIDE OF TRAFFIC.
- 4- PLACE CONES THRU THE WORK AREA AT THE MAXIMUM SPACING EQUAL IN FEET TO 2 TIMES THE POSTED SPEED LIMIT.
- 5- EXTEND LANE CLOSURES AT THE BUFFER SPACE SUCH THAT STOPPING SIGHT DISTANCE IS PROVIDED TO THE FLAGGER (REFER TO STD. 1101.11 SHEET 2).
- 6- DO NOT STOP TRAFFIC IN ANY ONE DIRECTION FOR MORE THAN 5 MINUTES AT A TIME.
- 7- DRUMS OR SKINNY-DRUMS MAY BE USED IN LIEU OF CONES. REFER TO ROADWAY STANDARD DRAWING 1180.01 FOR SKINNY-DRUM REQUIREMENTS.
- 8- USE FLAGGERS TO CONTROL TRAFFIC AT INTERSECTIONS AFFECTED BY THE LANE CLOSURE. SUPPLEMENT FLAGGERS LOCATED AT INTERSECTIONS WITH FLAGGER AHEAD SIGNS (W20-7a) PLACED APPROXIMATELY 250 FT. IN ADVANCE OF THE FLAGGER. FOR SIGNALIZED INTERSECTIONS PLACE SIGNALS IN THE FLASH MODE AND RECOMMEND THE USE OF LAW ENFORCEMENT.
- 9- REFER TO 2009 MUTCD, CHAPTER 6, FOR FLAGGER CONTROL, REQUIREMENTS, AND PROCEDURES.
- 10- DO NOT EXCEED A 1 MILE LANE CLOSURE LENGTH UNLESS OTHERWISE SHOWN IN THE TMP OR AS DIRECTED BY THE ENGINEER.

GENERAL NOTES FOR PILOT CAR OPERATIONS

- 1- USE PILOT CARS WHEN DIRECTED BY THE ENGINEER.
- 2- IF ROADWAY WIDTH IS LESS THAN 22 FEET (EOP TO EOP), CONES MAY NOT BE REQUIRED ALONG WORK AREA, AND AT THE DISCRETION OF THE ENGINEER, CONES MAY BE OMITTED ALONG THE WORK AREA IF USING A PILOT CAR.
- 3- CONES ARE ALWAYS REQUIRED IN THE UPSTREAM AND DOWNSTREAM TAPERS.
- 4- MOUNT SIGN G20-4 "PILOT CAR FOLLOW ME" AT A CONSPICUOUS POSITION ON THE REAR OF THE PILOT VEHICLE.
- 5- DO NOT INSTALL MORE THAN ONE (1) MILE OF LANE CLOSURE, MEASURED FROM THE BEGINNING OF THE MERGE TAPER TO THE END OF THE LANE CLOSURE.
- 6- ADVISE RESIDENTS AND BUSINESSES WITHIN THE LANE CLOSURE LIMITS ABOUT METHODS OF SAFE EGRESS AND INGRESS FROM DRIVEWAYS DURING FLAGGING AND PILOT CAR OPERATIONS.

LEGEND

- FLAGGER
- CONE
- PORTABLE SIGN
- DIRECTION OF TRAFFIC FLOW



Cabarrus County
& Stanly County
AST

